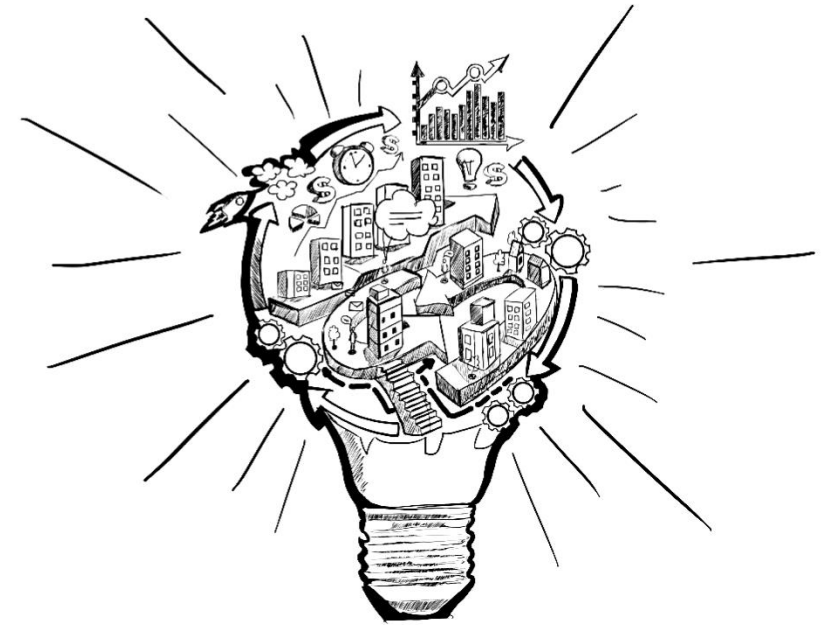


Labour Market Information



Julie Griffiths – EA Volunteer & HMRC
Wendy Shambrook - DWP

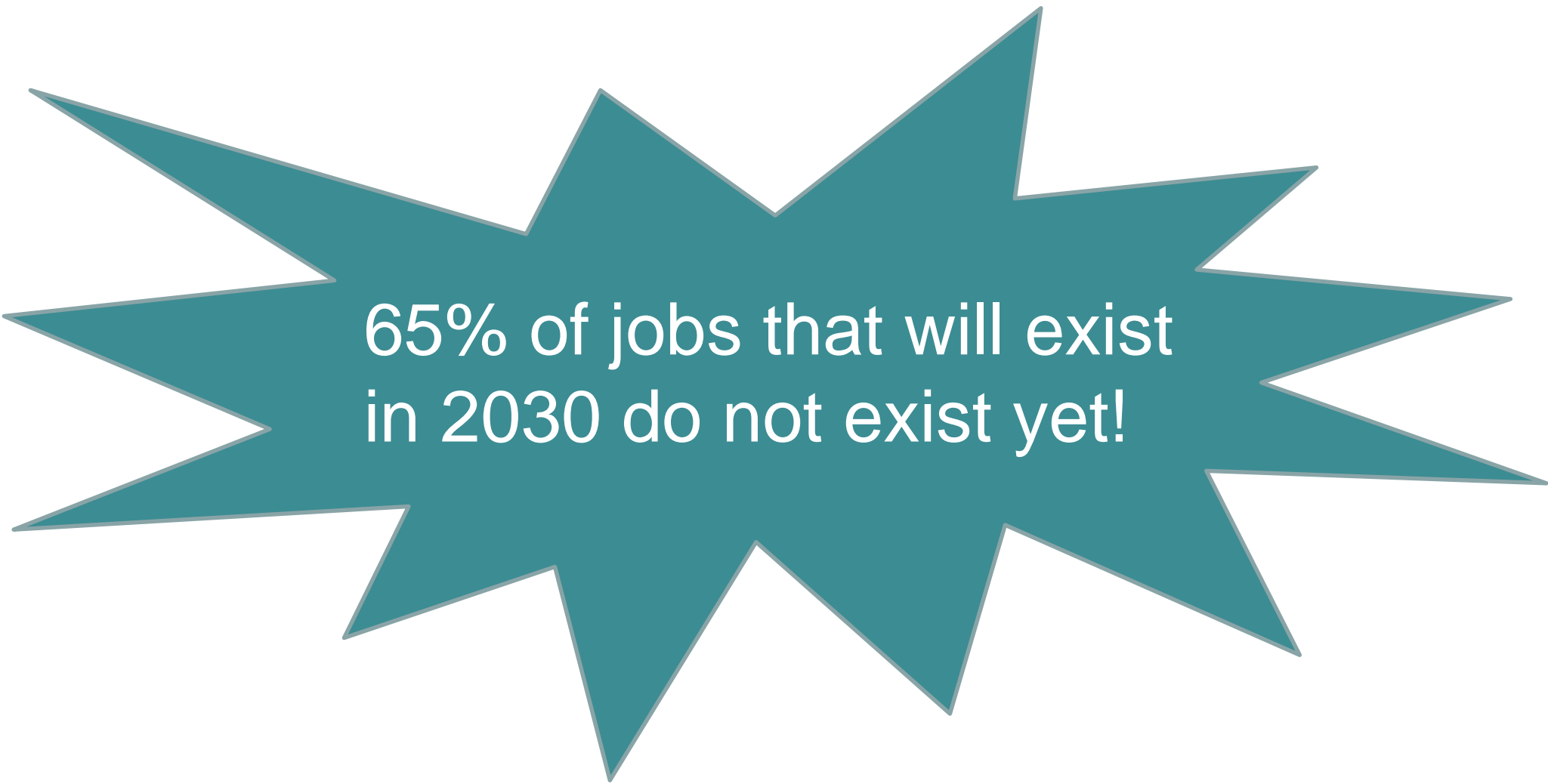
What is LMI ?

Labour Market Information (Intelligence) is a mix of data, statistics, research and practical experience about the world of work.

- 1) What jobs are available in your area
- 2) What type of opportunities are available and routes to employment
- 3) Insight into competition
- 4) Future trends
- 5) Exposure with employers and industry exp.



Wow Fact!



65% of jobs that will exist
in 2030 do not exist yet!

Employment is constantly changing



Skills Sought in Legal & Finance



Baseline Skills	Specialist Skills	Digital Skills
Communication Skills	Business Development	Microsoft Excel
Organisational Skills	Teamwork / Collaboration	Microsoft Office
Planning	Litigation	Microsoft Powerpoint
Detail-Orientated	Accounting	Microsoft Word
Microsoft Excel	Client Base Retention	SQL
Building Effective Relationships	Customer Service	Software Development
Problem Solving	Customer Contact	Visual Design
Research	Project Management	Java
Writing	Budgeting	Facebook
Meeting Deadlines	Professional Services Marketing	Microsoft C#

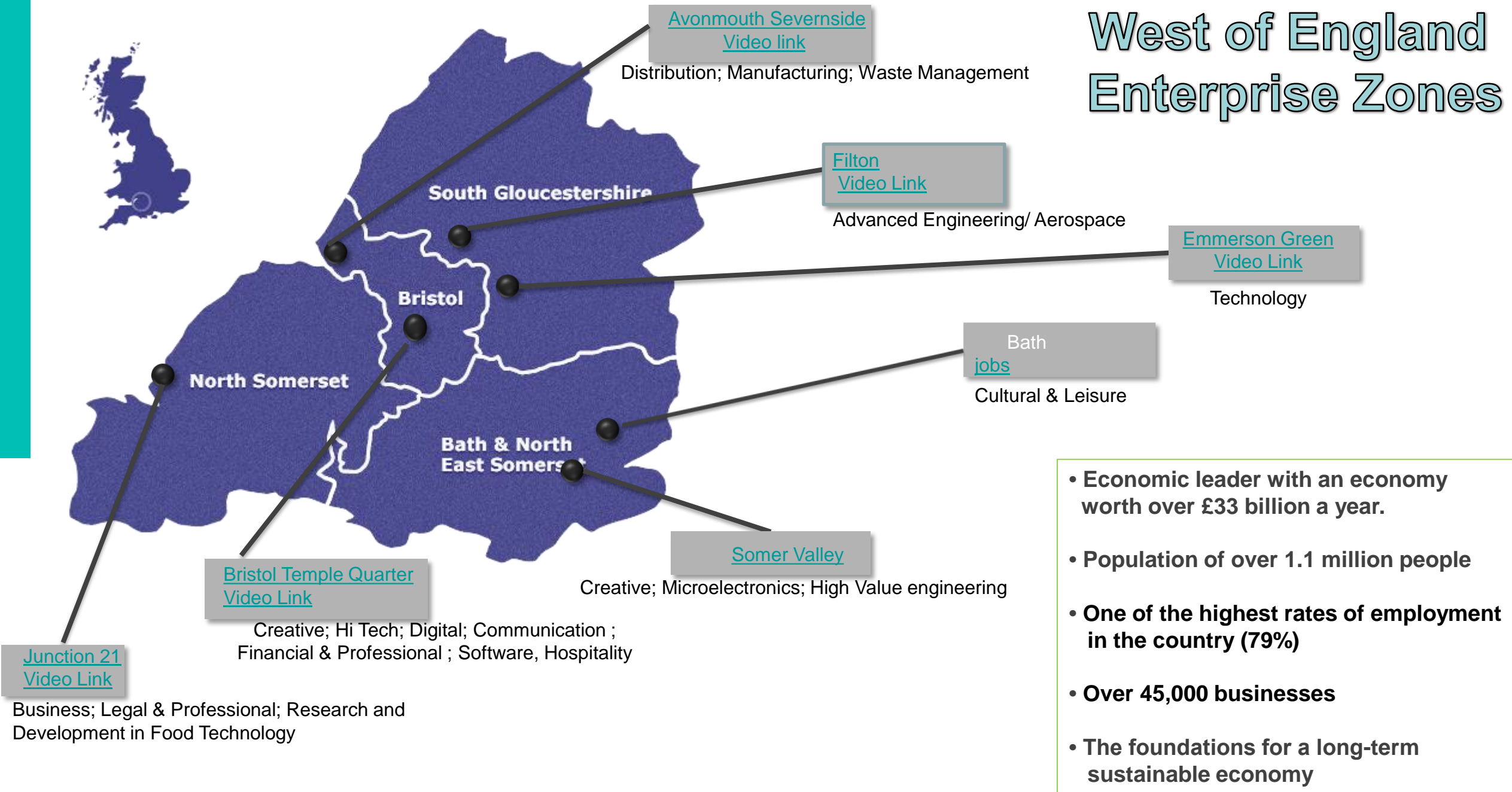


Transferable Skills




Source: Jan- Dec, 2019 Labour Insight, Burning Glass

West of England Enterprise Zones



- **Economic leader with an economy worth over £33 billion a year.**
- **Population of over 1.1 million people**
- **One of the highest rates of employment in the country (79%)**
- **Over 45,000 businesses**
- **The foundations for a long-term sustainable economy**

Some Major Employers in the Region

- 
- Airbus
 - University of Bristol
 - University of Bath
 - University of West of England
 - NHS
 - OVO Energy
 - ComputerShare
 - PWC
 - Burgess Salmon
 - KPMG
 - Bristol Water
 - Environment Agency
 - HMRC
 - GKN
 - MOD



Where can I get LMI? – *the basics to name a few*



Also in this section

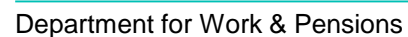
- ## Find out how jobs will grow in the South of England

Jobs and Growth in the South East

Jobs and Growth in the South Central area

Jobs and Growth in the South West

Jobs and Growth in the Thames Valley



Career Pilot/NCS – LMI in a BOX



[Advanced Engineering](#)



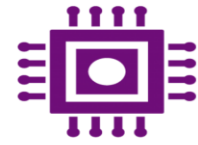
[Construction](#)



[Creative & Digital](#)



[Health & Life Sciences](#)



[High Tech](#)



[Low Carbon](#)



[Professional Services](#)



[Retail](#)



[Rural Economy](#)



[Visitor Economy](#)

Visitor Economy

West of England– forecast growth to 2022



Occupation

Administrative
Sales Accounts
Managers
Book-Keepers
Chefs
Van Drivers
Receptionists
Retail Assistants
Catering Assistants
Financial Assistants
Serving Teams
Cooks
Conference Managers
Cleaners
Bar Staff
Catering Managers
Leisure Manager
Sports Coach

How many of you know !

Social-media & professional networks



94%

Recruiter use SM for planning
and recruiting

61%

Recruiters use Linked-IN

Some Major Projects impacting on the West of England

- Hinkley Point C
- Bristol Arena site
- Bristol University Campus
- Expansion of Bristol Airport (Final Phase)
- Filton Airfield (homes plus Manufacturing)
- Railway electrification of the Line between London and South Wales
- Weston-Super-Mare - Dolphin Square redevelopment
- M5 Junction 21 development
- Expansion of Severnside and the new M49 Junction
- New Airbus STEM Academy

Thank You for your time

I hope you find this information useful



Department for
Work and Pensions